



Where access takes flight

Enabling easy, standardized collection of first-void urine from males and females, the **Colli-Pee™•Dx Urine Collection Kit** is 510(k) cleared for sample collection both at-home and in any private setting for sexually transmitted infection (STI) laboratory testing.

Powered by **NucleoPrecision™ technology**, a proprietary stabilization solution, samples are stabilized for STI laboratory testing for 5 days during transport and for 30 days when stored at ambient temperature.

What is first-void urine?

First-void urine is the first fraction of urine produced at any time of day, which exhibits elevated concentrations of specific biomarkers, such as DNA and RNA. As a result, first-void urine is a valuable sample type for the STI laboratory testing of *Chlamydia trachomatis* (CT), *Neisseria gonorrhoeae* (NG), *Trichomonas vaginalis* (TV) and *Mycoplasma genitalium* (MG).^{1,2}

Elevate the patient experience



At-home collection



Accessible testing



Total privacy



Preferred sample type³



510(k) cleared

The Colli-Pee™•Dx Urine Collection Kit provides patient value for STI laboratory testing

Eliminate travel, waiting rooms and scheduling delays with testing that fits seamlessly into daily life.

At-home collection

Return by mail

STI laboratory testing

Results



The Colli-Pee™•Dx Urine Collection Kit demonstrates safety and effectiveness for at-home collection

Ease of use

98% of users agreed that the Colli-Pee™•Dx Urine Collection Kit was easy to use, and the majority of users preferred the device over a urine cup.³

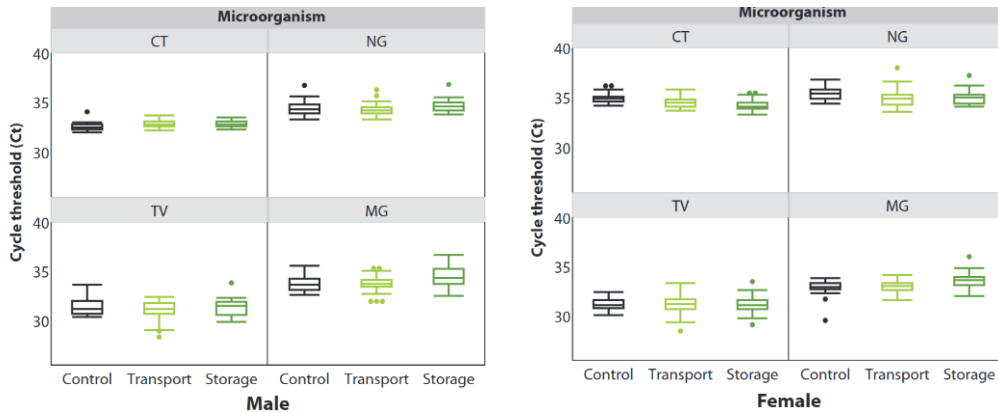
Comprehension

When tested on their comprehension of the collection instructions, users gave a correct response 91% of the time.³

Assay performance

99% of specimens returned valid results on the assays tested.³

The Colli-Pee™•Dx Urine Collection Kit stabilizes STI-causing microorganisms



The Colli-Pee™•Dx Urine Collection Kit preserves urine samples reliably during real-world shipping and storage conditions for both male and female urine. After temperature cycling over 5 days and storage for 30 days, samples collected remained stable for testing using Roche's *Chlamydia trachomatis* (CT), *Neisseria gonorrhoeae* (NG), *Trichomonas vaginalis* (TV), and *Mycoplasma genitalium* (MG) assays run on Roche's cobas® 5800, 6800, and 8800 molecular diagnostic systems.

Product specifications

- 4 mL sample collection volume
- Pre-collection storage temperature: 15°C-30°C (59°F-86°F)
- Transportable for 5 days without temperature controls.
- Collected specimens remain stable if stored at 2°C-30°C (36°F-86°F) for 30 days.
- Shelf life: 12 months from date of manufacturing
- Customizable turn-key mailing solution for at-home use with optional single order fulfillment services available.



For more information, scan the QR code or visit us at dnagenotek.com/colli-pee/dx

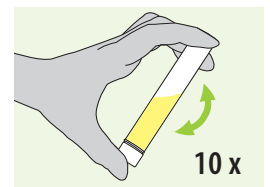
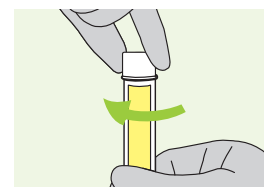
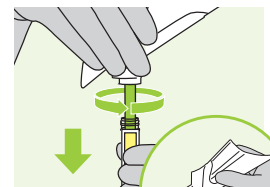
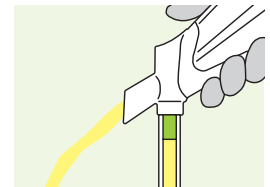
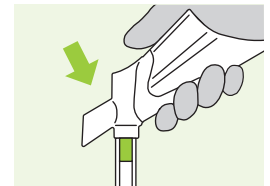
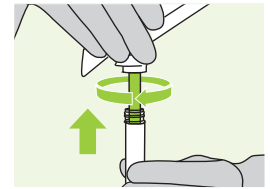
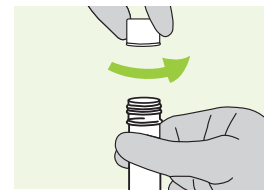


References

- 1 De Baetselier I, Smet H, Abdellati S, et al. (2019). Evaluation of the 'Colli-Pee', a first-void urine collection device for self-sampling at home for the detection of sexually transmitted infections, versus a routine clinic-based urine collection in a one-to-one comparison study design: efficacy and acceptability among MSM in Belgium. *BMJ Open*. 9:e028145. doi:10.1136/bmjopen-2018-028145
- 2 Laeremans M, Mahieu L, Pasmans D, et al. (2021). Chlamydia trachomatis and Neisseria gonorrhoeae DNA stability in preserved first-void urine. *Sexually Transmitted Infections*. 97(Suppl 1):A157.2. doi:10.1136/sextrans-2021-sti.413
- 3 Data on file. Available upon request.

Some DNA Genotek Inc. products may not be available in all geographic regions. Colli-Pee is a trademark of DNA Genotek Inc., registered in various jurisdictions. All other brands and names contained herein are the property of their respective owners. Patent (www.dnagenotek.com/legal-notices) PD-BR-407 v1/06-26

Simplified collection



For full collection instructions, visit www.dnagenotek.com